

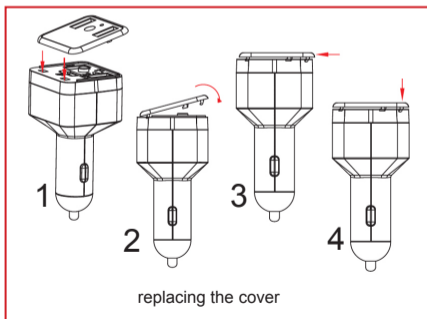
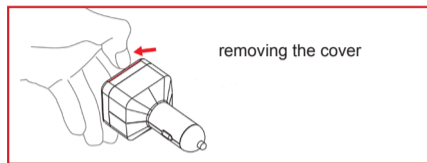
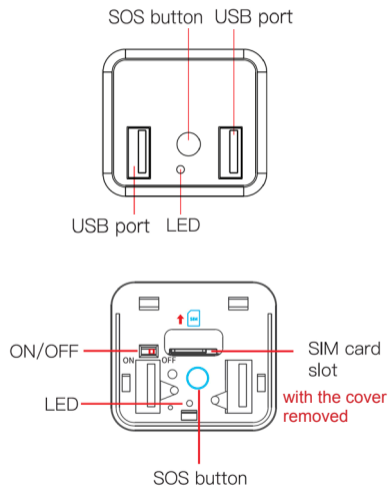


## AM-T01 GPS Tracker

Please see our website:  
[www.amacam.net](http://www.amacam.net)  
[gps.amatrac.com](http://gps.amatrac.com)

For technical support please contact us at:  
[support@amacam.net](mailto:support@amacam.net)

## Overview



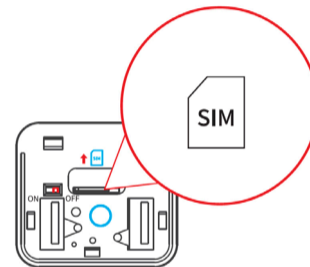
## Functions

The AM-T01 will send information to a linked smartphone, using the **Track Solid app**, as follows:

- Vehicle location tracking , using GPS and Google Maps with your smartphone.
- Tamper protection, sending a message to your smartphone if the device is disconnected or otherwise tampered with.
- Boundary setting – the geofence function will send a message to your smartphone of the vehicle goes outside a zone that you can easily set using the Tracksolid app.
- Persons in the vehicle can use the AM-T01 SOS button to send an emergency message to up to three linked smartphones.
- Listen-in. You can send an SMS message to your AM-T01, with a command to call the SOS numbers. Users of the SOS numbers can then hear sound from the vicinity of the AM-T01.

## Fitting the SIM card

Please purchase a nano SIM card from a network service provider, with SMS and GPRS.



When the nano SIM card is inserted and the AM-T01 is ON, the LED will light up.

The LED will then flicker four times when the AM-T01 is switched off.

If the SIM card is not successfully installed then the LED will remain off for 3 minutes.

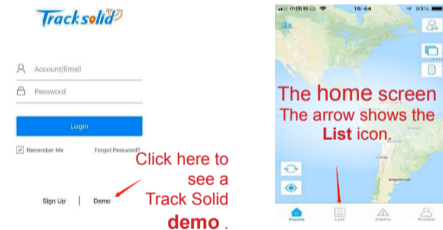
## Downloading, registering and using the Track Solid app

**1** Download the app from the Apple App Store or Google Play Store. Please search for "Tracksolid" or scan the QR code below using your smartphone.



**2** Sign up to create an account on your smartphone. You will need to request a verification code. It will be sent to your email address.

**3** Then return to the app home page. Enter the IMEI number that can be found on your AM-T01 or on the box. You can either scan the bar code, or enter the number manually. You will then be prompted to enter your vehicle's details.



**4** On-screen instructions show you how to use the app.

## Setting SOS phone numbers

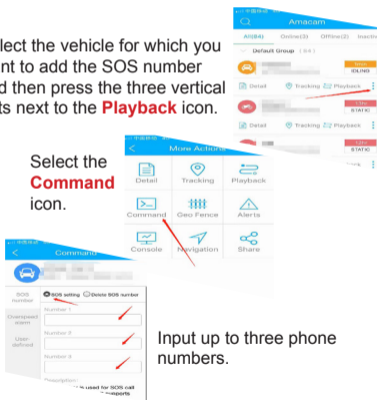
You may also set up SOS text messages to up to three phone numbers.

**1** Press the **List** icon on the app home screen.

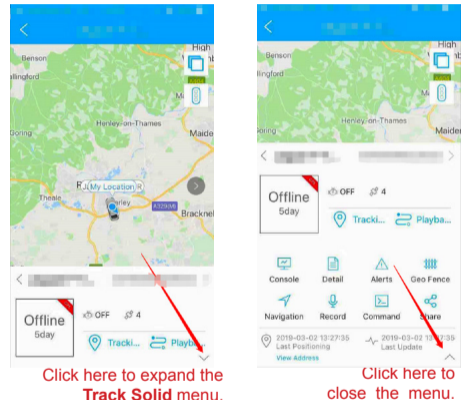
**2** Select the vehicle for which you want to add the SOS number and then press the three vertical dots next to the **Playback** icon.

**3** Select the **Command** icon.

**4** Input up to three phone numbers.



## Accessing the Track Solid menu



## Summary of set-up steps

You can also use the following website for additional features:  
[gps.amatrac.com](https://gps.amatrac.com)  
 Please use the same login details as you used to register the app.

**1** Download the Track Solid app. This allows you to register vehicle details, set the geofence (geographical boundary), send 'listen-in' commands, and set SOS numbers,

**2** Register your AM-T01 here: <https://www.amacam.net/product-registration>  
 This will activate your app, your website platform subscriptions, your one year's warranty, and online technical support. Please ensure that you enter your IMEI number.

**3** You may also use the Amatrac website with additional benefits, at: [gps.amatrac.com](https://gps.amatrac.com)