

- Camera-to-phone live view from forward and interior lenses
- Camera-to-phone live GPS location tracking
- Free cloud video and photo storage
- 6 months GPS tracking log
- 1080P recording
- 6G glass lens
- WiFi option

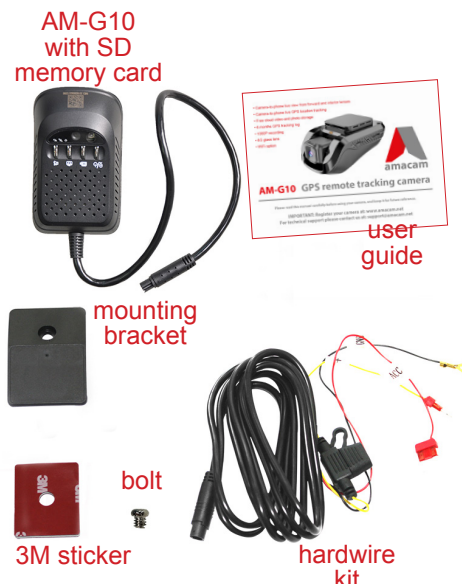


AM-G10 GPS remote tracking camera

Please read this manual carefully before using your camera, and keep it for future reference.

IMPORTANT: Register your camera at: www.amacam.net
For technical support please contact us at: support@amacam.net

In the box



IMPORTANT

FIRST ...

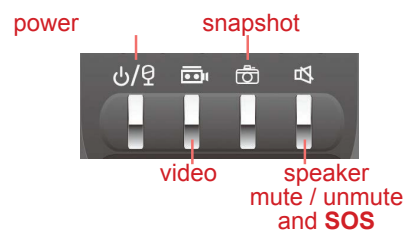
register your new camera at:
www.amacam.net

User Guide editorial and design by
Smilite Ltd, London, and 星灵美, 深圳
idaub@me.com

Introduction



Buttons



Power
» 'Long-press' to turn the camera on and off
» 'Quick-press' to mute/unmute the microphone
» NOTE: The camera powers on automatically when the engine is started.

Video
» 'Quick press' for fast start of video recording

Snapshot
» 'Quick press' to take a still photo using the forward-facing lens.

Speaker
» 'Quick press' to turn the warning tone on or off
» Press for 3 seconds to trigger the SOS alarm

LED indicators

Power indicator
» Continuous red: Initialisation in progress, ACC power is on
» Slow flashing red: ACC is off

GPS indicator
» Continuous yellow: GPS is able to fix location
» Flashing yellow: ACC is on but the GPS system is unable to fix the location
» Off: ACC is off

Network signal indicator
» Continuous blue: telecom service provider network is working
» Flashing blue: No SIM card inserted OR no network detected
» Off: ACC is off

Vibration alarm
» Slow flashing blue: vibration defence is active.
» Quick flashing blue: phone app receives message
» Off: vibration defence is on standby

Essential DOs and DON'Ts

- » Comply with the law in your home country.
- » Remember that the camera and the information it supplies to you (such as position, speed and distance warning) do not diminish your responsibility as a driver in the active road environment.
- » The GPS positions are indications that are subject to the active road environment. For example, the camera cannot receive GPS information in tunnels or enclosed car parks. Tinted windows, weather conditions, city buildings, trees, and devices that emit radio (such as microwave ovens) may also affect the GPS signal.
- » Make sure that the camera is connected to the vehicle power supply by a qualified technician, using the hardwire kit supplied.
- » Remember that it is normal for the camera to be warm during use.
- » Dispose of the camera according to your local regulations.
- » Make sure that the hardwire kit connecting the camera to the vehicle power supply does not obstruct the driver's view or the operation of the vehicle airbags.
- » Clean the lens gently with a microfibre cloth.
- » Store between -30°C and 65°C.
- » Please don't leave the camera in direct sunlight in an unventilated space for a long time.
- » Please don't touch the camera lenses – even small smudges from fingers can blur the recorded image.
- » Please don't install on a tinted window. Not only may the tinted window obstruct the GPS signal but may itself be damaged.

Installation

Fixing the camera

- » Fix the mounting bracket to the windscreen, using the 3M adhesive pad. Make sure that the windscreen is clean and dry.
- » We recommend that you fix the camera near the rear view mirror, with no obstructions to the camera view.
- » The flap on the bracket can face forward or backwards. We recommend that it in a vehicle with a steeper windscreen (truck or van) it faces backwards, but in a saloon car with an angled windscreen it can face forwards to hide the bracket.
- » Use the bolt provided to fix the camera to the mounting bracket.
- » Stick the 3M adhesive pad to the mounting bracket. Remove the protective sheet from the adhesive pad.
- » Place the camera in the required location and press the adhesive pad against the windscreen for one minute.

Connecting to the vehicle power supply

The hardwire kit must be secured where it will not cause any obstruction.

It is necessary to connect to the vehicle fuses. This work should be carried out by a qualified technician.

The fuse box will have two types of power supply a – constant power for devices such as the vehicle horn, and ACC for devices that only receive power when the vehicle ignition is active. The hardwire kit (supplied) has three connectors –

- » Yellow – for constant power so that the camera receives power when the vehicle is parked,
- » Red – for the ACC connection for power when the vehicle is active.
- » Black – which should be connected to the vehicle body to ground / earth the system

The memory card

» The camera uses a Micro SD memory card (supplied) to record data including the video images.

The SIM card

- » The camera is a telecommunications device and requires a SIM card.
- » Purchase a SIM card using a network provider of your choice, **with 3G coverage or 4G coverage with 3G fallback.**
- » Insert the SIM card in the rear slot in the camera.

Recording

ACC (vehicle ignition) on: The camera is on and records automatically.

ACC (vehicle ignition) off: The camera is in sleep mode and will not record.

Memory: Video is saved to the SD card every 3 minutes. When the card is full, previous recording is overwritten.

To view video, connect the SD memory card to a computer and go to:
DVRMEDIA\CarRecorder\GENERAL.

In standby mode (when ACC/vehicle ignition is off) an impact or strong vibration will initiate recording for 15 seconds. This recording will be saved to: A notification will be sent to the linked phone.

The camera will not record if there is no SD card. In this case the camera will emit a warning tone every 5 minutes.

Vibration alarm

The vibration alarm becomes active with ACC (vehicle ignition) OFF, five minutes after the engine is stopped.

The alarm will delay for fifteen seconds after vibration detection. After that the alarm indicator flashes and notification is sent to the APP.

The alarm turns off fifteen seconds after the engine is started. The alarm will not trigger during the following one minute.

SOS

If the SOS button is pressed for three seconds the camera will call SOS numbers (which can be set using the app at settings > command) and send a notification to the app.

More Questions?

Please get help from:
www.amacam.net

You can also email us at:
support@amacam.net

Setting up the Car Matrix app

The app, with your SIM card, provides your link between your vehicle and your phone or computer.

FIRST: Register your camera at www.amacam.net

Download the app

You need to download the app. Go to the Apple app Store or Google Play, and search for CarMatrix OR you can scan this QR code.



The QR code will take you to the app in the store that matches your phone.

Sign up

Once downloaded, you need to create an account. There will be on-screen guidance.

To sign up for the first time, enter your email address.

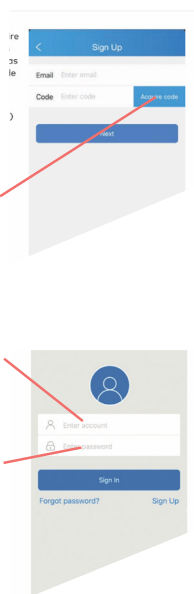
Click [here](#) to request a verification code.

The code will come to your email address. Enter the code.

For 'Enter account' please use the same email address as you have already used.

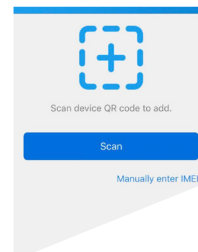
Choose and enter your password, which you will use for future sign in.

Then press Sign Up. (In future, simply press Sign In.)



Link your camera to your phone

Use your phone to scan the QR code from the rear of the camera OR enter your camera's IMEI number. (It's a 15 digit number printed on the camera.) Enter the vehicle registration number and give a name to the camera.



If your phone is connected to the internet the app will show the vehicle current location.

To link with more than one phone, simply repeat this process.

Initialize

After fixing the camera in the car and setting up the app, you need to drive for five minutes to ensure that the GPS tracking is initialized.

Using wifi

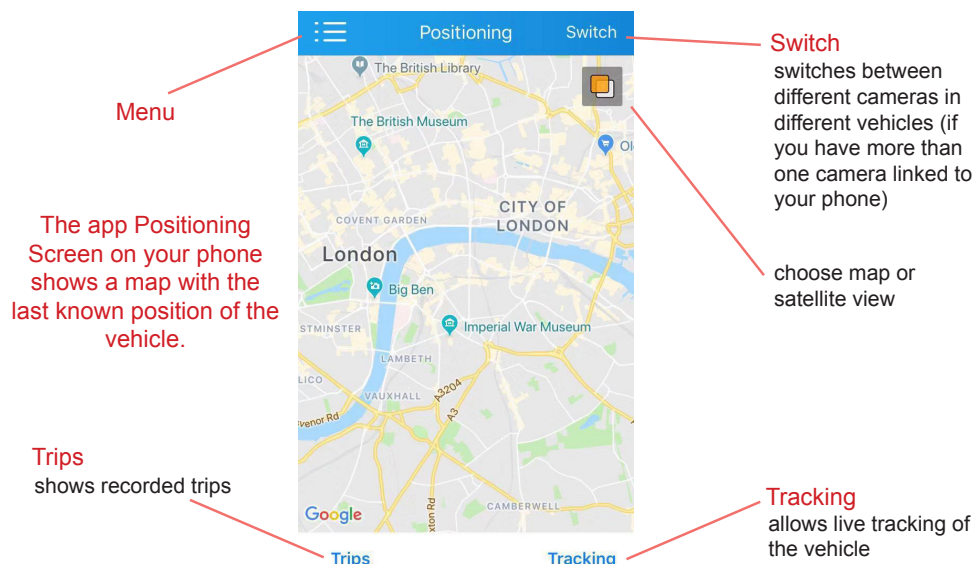
Your phone can connect to the camera when within WiFi range, up to about 10 metres from the vehicle.

In your phone's WiFi setting, the link name is the IMEI number of the camera. The WiFi password is the last eight digits of the IMEI number.

You can use the WiFi connection to ...

- » ... transfer data from your camera (video and still images). This does not use the telecom network service.
- » ... provide a hotspot for general data service such as surfing the internet. The network service provider will make a charge.

Using the app



The app Menu

