



AM-DC07 User Manual

Ver 1.0

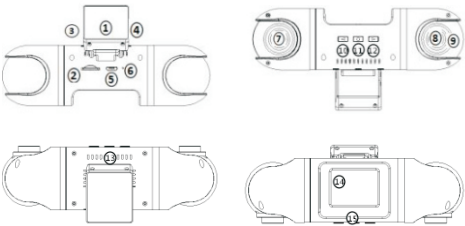
1

support@amacam.net
www.amacam.net

In the Box

- 1 x Amacam AM-DC07
- 1 x Camera Mount
- 1 x Power Cable with GPS
- 2 x Adhesive Pad
- 2 x Screen Mount Film
- 1 x Pry Tool
- 1 x Lens Cloth
- 1 x User Manual

Features



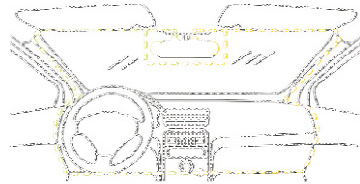
1	Mount	Adhesive and detachable
2	Micro SD Card Slot	For external micro SD card
3	Micro USB Port 1	Power connector
4	Micro USB Port 2	Optional power connector
5	Micro USB Port 3	Optional power connector & data sync
6	Microphone	Records audio
7	Front Camera Lens	270° rotatable vertically 180° rotatable horizontally
8	Rear Camera Lens	270° rotatable vertically 180° rotatable horizontally
9	IR LED	8pcs IR LED lights for infrared night vision
10	Up Button	Video lock/unlock - Switch screen - Menu settings
11	OK Button	Pause recording - Power on/off - Confirm Reset
12	Down Button	Take snapshots - Mute/Unmute - Playback
13	Speaker	Plays audio in playback mode

2

14	LCD Screen	1.5" TFT Colour LCD display
15	LED display	Indicates working modes

Installation

1. Attach the camera onto the mount.
2. Select an ideal location (A or B) on the windscreen near the rear-view mirror.



3. Remove the protective film from the adhesive pad and firmly affix the mount onto the windscreen.
4. Tuck the power cable into the seams and weatherstrips around the edge of the windscreen and the dashboard.
5. Adjust the viewing angle of front lens and rear lens respectively to ensure that they are aligned with the road ahead and the cabin inside.

Daily Use

Monitor the following four key points:

1. Micro SD card: An alert will sound if the SD card is missing, needs formatting, or needs replacing.
2. Reformat the SD card every two weeks.
3. Camera power state: Camera LED displays means the camera is working.
4. Camera recording mode: The red flashing point on screen means the camera is recording.

3

Shortcut Keys

All the following shortcut keys are applicable in **Recording Mode**

Short Press	UP	Lock/Unlock the current video clip
Long Press		Switch screen between front and rear views
Short Press		Pause recording
Long Press	OK	Power On/Off
10s Long Press		Reset the camera
Short Press		Take a snapshot
Long Press	DOWN	Mute/Unmute the microphone

LED Indication

Blue Flash	Normal recording
Blue Constant On	Firmware upgrading/SD card error/Motion Detection
Red Flash	Time Lapse 1FPS in parking mode

Screen Overview



1	Resolution	Video resolution for front & rear
2	Microphone	Audio is being recorded
3	SD card	SD card is installed properly
4	Recycle	1min recycle
5	Parking Mode	Time Lapse or Motion Detection is on

4

6	Emergency lock	Lock current video clip
7	Video Duration	Current video clip recording time
8	Recording Mode	Camera is recording
9	Time	Current time YYYY/MM/DD

Menu Settings

Enter Menu	Short press OK to pause recording then long press UP
Set parameters	UP/DOWN to navigate press OK to confirm
Exit Menu	Long press UP to go back to Recording Mode

Menu Details

Function	Set up
Resolution	2560*1440P, 30FPS+720P/1920*1080P, 60FPS+720P/1920*1080P, 30FPS+720P
Bitrate	Super Fine/ Fine
Recycle	OFF/1min/3min/5min
Time	Manual setup is required
Time Stamp	On/Off
Language	English/ Español/Русский/简体中文/ Deutsch/日本語
Mute	Mute/ Unmute
Beep Sound	On/Off
Start Tone	On/Off
Screen	Always On/1min off/3min off
TV type	NTSC/ PAL
Frequency	50HZ/60HZ
G-sensor	High/ Middle/ Low
Parking	OFF/ Time Lapse 1FPS/ Motion Detection
Guard Time	15min/1 Hour/6 Hour/24 Hour
IR Mode	Auto/ On/Off
Mirror	Left mirror/ Right mirror/ No mirror
EV	0/ From-2.0 to+2.0
GPS STAMP	On/Off
Speed unit	MPH/ KMH
Speed	Speed Stamp On/ Speed Stamp Off
TimeZone	Manual setup is required
Format	No/Yes

5

Default	No/Yes
Version	xxxxxx
DVR version	xxxxxx
MCU version	xxxxxx

Note

Bitrate	1440P 30FPS	1080P 60FPS	1080P30FPS
Super Fine	16Mbps	12Mbps	10Mbps
Fine	12Mbps	10Mbps	8Mbps

Infrared Guide

1. IR mode Auto, the camera automatically turns on/off infrared night vision.
2. If the ambient light level is lower than the threshold value, the camera turns on infrared night vision.
3. If the ambient light level is higher than the threshold value for 10 consecutive seconds, the camera turns off infrared night vision.
4. There is a possibility that the infrared night vision is unable to turn on due to driving through a street with very bright street lights. This will result in a dark image being recorded of the car interior. We suggest that you manually set IR MODE to "ON" if every video at night needs to be recorded with infrared night vision.

Parking Monitor

The parking monitor requires a constant power supply and will only record using the front camera.

Set either Time lapse 1FPS or Motion Detection and Guard 15 minutes, the camera will automatically turn off after 30 minutes when the vehicle is parked.

Note: Motion detection is not triggered by motion sensor but by sensing the changes of ambient luminance through the front lens.

Video Playback

1. Enter into Playback: Short press OK to pause Recording Mode (Red dot will disappear off screen) Long press DOWN
2. UP/DOWN to select the subfolder and OK to enter.
3. UP/DOWN to select the target video clip OK to Play/Pause the video clip.
4. Enter into Rear Cam from Front Cam. Long press DOWN.

6

5. When the video clip is playing/pausing, Long press UP to enter into Delete/Lock. Long press UP again to exit from Delete/Lock.
6. Exit from Playback In Play Mode. Long Press DOWN to Front Cam. Long Press DOWN again to Rear Cam. Long Press DOWN again to Recording Mode.



View Camera Recordings

There are two options for viewing the recorded video footage.

1. Connect the camera directly to a computer using a suitable USB data cable. Press the DOWN button on the camera simultaneously as the data cable connects. Release the DOWN button when the USB icon appears on camera's screen.
2. Remove the SD card from the camera and insert into a computer using a card reader, if required.

To view the video footage, use the software called **GVP**.

Download for Windows or MAC.

Windows

https://master.dl.sourceforge.net/project/gvplayer-win/GVPlayer_WIN.7z

MAC

https://master.dl.sourceforge.net/project/gvplayer-mac/GVPlayer_MAC.7z

Insert the SD card into a computer. Using file manager, locate the folder named "PLAYER". Open the text file "Readme" and copy the appropriate URL and paste into a web browser. The file will download. Extract the files to a convenient location. Find and double click the GVP.exe file.

To view the recorded videos, select "Open File" in the player and select the SD card then press "OK". The video files will load up into the player. Please see the picture below.

7



Camera Reset

10S long press OK, then the camera starts to reset automatically.

Firmware Upgrade

Important: The camera must be powered up for the duration of the update.

1. Back up the files on the micro SD card if required.
2. Format the SD card using the format option in the camera.
3. Extract the firmware DVR (BIN file) or MCU (IAP file) and place it in the root folder of the micro SD card.
4. Insert micro SD card into camera and then turn on the power. Make sure camera is connected to the power cable during whole update process.
5. The camera will update automatically. On screen confirmations will appear as follows: Read File - Write Firmware - Write Done. The complete process will take several minutes.
6. The camera will reboot after the update is completed.
7. It is recommended that the micro SD card is then formatted in the camera after the firmware update.
8. Check settings as required. The camera will revert to factory default setting.

8

Specifications

Main Processor	M5C8328Q
Image Sensor	Front: OV4689 4-megapixel CMOS Rear: H62 1-megapixel CMOS
Lens	Front: 140° view angle, 6-layer glasses, 1 infrared filter Rear: 130° view angle, 8pcs infrared LED
LCD screen	1.5" TFT LCD
G-sensor	Built-in, 3-axis, Sensitivity 3-level adjustable
System Language	English /Español/Deutsch/Русский/简体中文/日本語
Video	.MOV format 2560*1440P 30FPS + 720P 1920*1080P 60FPS + 720P 1920*1080P 30FPS + 720P
Audio	Built-in microphone & speaker
Image	JPEG format
RAM	2GB
Storage	External SDHC micro SD. Up to 128GB. Class 10 (UHS-1) or above. FAT32
Battery	No. Built-in supercapacitor
Power Input	5Vdc/1.5A
Power Interface	Micro USB
Power Consumption	4W-5.5W
Working Temperature	-4° to 158°F (-20° to 70°C)
Storage Temperature	-4° to 176°F (-20° to 80°C)

9

Trouble Shooting

Camera will not record.

Check if there is enough storage space on the micro SD card. Check the number of protected files (read only attribute). Format the SD card.

Camera records intermittently.

The data stream is high-definition video and the file sizes are very large. We recommend a high-quality micro MLC SD card.

"File Error" prompt during playback.

Corrupt data storage will result in the file error. Use the "FORMAT CARD" menu to format the micro SD card. Consider changing the SD card if this happens on a regular basis.

Video is blurred.

Remove the lens protect ion film. Ensure the lens and windscreen are clean. Use a lens cleaner to clean the lens if necessary.

Video has horizontal lines.

This is due to the wrong "Flicker" setting. Adjust to the required frequency 50Hz / 60Hz.

Camera does not auto start recording when the ignition is turned on.

Set the Movie Clip Time to 1 / 3 / 5 minutes. Not OFF. The camera will not auto start recording when Movie Clip Time is OFF and the micro SD card is full.

Camera is frozen.

Unplug the power cable from the camera. Wait for 30 seconds then reconnect.

Camera takes a long time to boot up.

If the camera has not been used for a long time it may take longer to boot up due to the initial conditioning of the super capacitor. This is normal and not a fault. The camera does not have a built-in battery.

support@amacam.net
www.amacam.net

10

正面

反面