



AM-DC07

User Manual

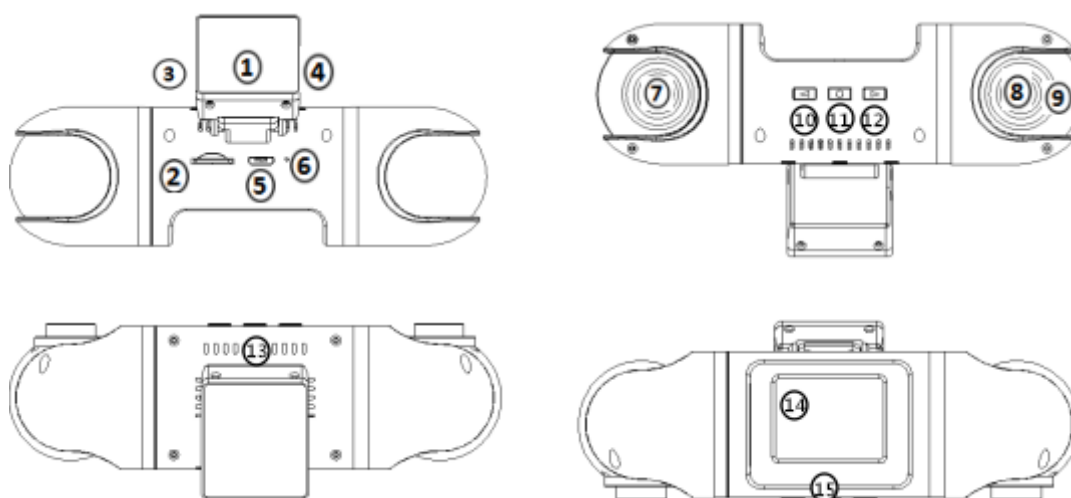
Ver 3.0

support@amacam.net
www.amacam.net

In the Box

- 1 x Camera AM-DC07
- 1 x Camera Mount
- 1 x Power Cable with GPS
- 2 x Adhesive Pad
- 2 x Screen Mount Film
- 1 x Pry Tool
- 1 x Lens Cloth
- 1 x User Manual
- 1 x USB Card Reader & Adapter

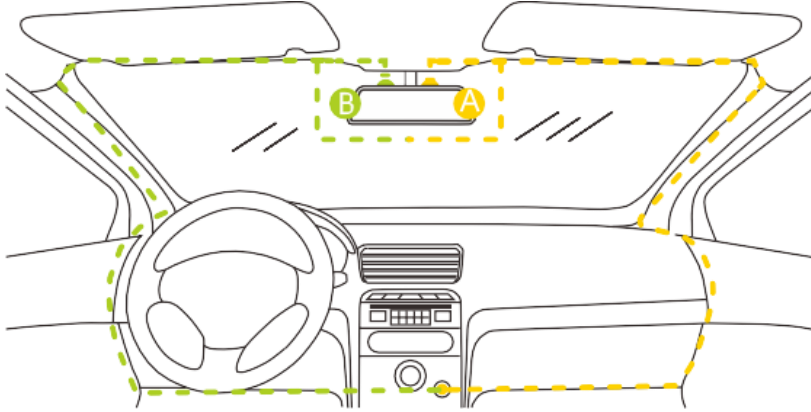
Features



1	Mount	Adhesive and detachable
2	Micro SD Card Slot	For external micro SD card
3	Micro USB Port 1	Power connector
4	Micro USB Port 2	Optional power connector
5	Micro USB Port 3	Optional power connector & data sync
6	Microphone	Records audio
7	Front Camera Lens	270° rotatable vertically 180° rotatable horizontally
8	Rear Camera Lens	270° rotatable vertically 180° rotatable horizontally
9	IR LED	8pcs IR LED lights for infrared night vision
10	Up Button	Mute/Unmute - Switch screen - Menu settings
11	OK Button	Pause recording - Power On/Off - Confirm - Reset
12	Down Button	Take snapshots - Video Lock/Unlock - Playback
13	Speaker	Plays audio in playback mode
14	LCD Screen	1.5'' TFT Colour LCD display
15	LED display	Indicates working modes

Installation

1. Attach the camera onto the mount.
2. Select an ideal location (A or B) on the windscreen near the rear-view mirror.



3. Remove the protective film from the adhesive pad and firmly affix the mount onto the windscreen.
4. Tuck the power cable into the seams and weatherstrips around the edge of the windscreen and the dashboard.
5. Adjust the viewing angle of front lens and rear lens respectively to ensure that they are aligned with the road ahead and the cabin inside.

Daily Use

Monitor the following four key points:

1. Micro SD card: An alert will sound if the SD card is missing, needs formatting, or needs replacing.
2. Reformat the SD card every two weeks.
3. Camera power state: Camera LED displays means the camera is working.
4. Camera recording mode: The red flashing point on screen means the camera is recording.

LED Indication

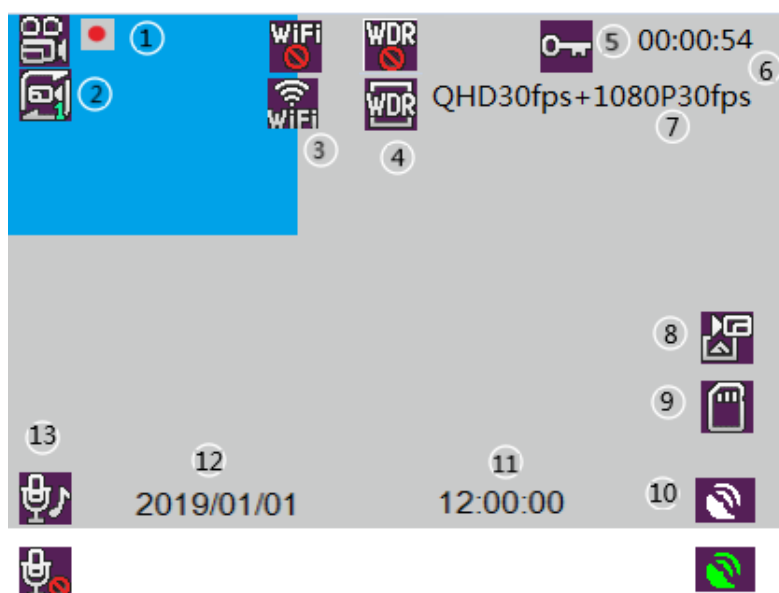
Red Flash	Normal recording
Red Constant On	Stop recording

Shortcut Keys

All the following shortcut keys are applicable in **Recording Mode**

Short Press	UP	Mute/Unmute the microphone
Long Press		Switch screen between front and rear views
Short Press	OK	Pause recording
Long Press		Power On/Off
Short Press	DOWN	Take a snapshot
Long Press		Lock/Unlock the current video clip

Screen Overview



NO	Name	Description
1	Recording Mode	Camera is recording
2	Recycle	1min recycle
3	Wi-Fi	Wi-Fi signal (Optional)
4	WDR	WDR
5	Emergency lock	Lock current video clip
6	Video Duration	Current video clip recording time
7	Resolution	Video resolution for front & rear
8	Photo	Take a photo
9	Mic	Audio is being recorded
10	GPS	GPS star search signal (Optional)

11	Time	Current time HH/MM/SS
12	Date	Current date YYYY/MM/DD
13	Mic	Audio is being recorded

Menu Settings

Enter Menu	Short press OK to pause recording then long press UP
Set parameters	UP/DOWN to navigate press; OK to confirm; Long press Down to switch video and setup menu
Exit Menu	Long press UP to go back to Recording Mode

Menu Details

Video Menu:

Function	Set up
Video Resolution	QHD 30fps+FHD30fps/ FHD 30fps+FHD30fp
Loop Recording	Off/ 1Minute
WDR	Off/On
Brightness	Brighter/ Normal/ Darker
Record Audio	Off/On
G-SENSOR	Off/On
Data Info Stamp	Off/On

Setup

Menu:

Function	Set up
Date/Time	Manual setup is required
Language	English/ Français/ Español// Português/ Deutsch/ Italiano/简体中文/ 繁體中文/ Русский/日本語
Time Zone	Manual setup is required
Auto LCD	Off/1Minute/3Minutes/5Minutes
Volume	8/9/10
IRLED	Off/On/Auto
Speed Unit	Km/h or MPH
Formatting	All data will be Deleted/Cancel/Ok
Default Setting	Return/Cancel/OK
Version	YY/MM/DD

Note

Bitrate	1440P 30FPS	1080P30FPS
Super Fine	16Mbps	10Mbps
Fine	12Mbps	8Mbps

Infrared Guide

1. IR mode "Auto" means the camera automatically turns on/off infrared night vision. Its working principle is, by presetting the threshold value of luminance to sense the changes of luminance through the front lens:

- (a) If ambient luminance is less than the threshold value in any moment. then the camera turns on infrared night vision immediately.
- (b) If ambient luminance is higher than the threshold value in 10 consecutive seconds. then the camera does not turn on infrared night vision.

Accordingly, there is a possibility that the infrared night vision cannot be turned on precisely when the car passes along a road with bright street lights or in a bright underground garage, this can then lead to a dark image recording in the car cabin. We suggest manually setting IR MODE "ON" instead if every video in the night time needs to be seen by infrared night vision.

2. Screen: To set screen to off, the settings are "1 min off or 3 min off. Short press UP or Down for screen on.

3. Format: The data in memory card will be unrecoverable after formatting.

Video Playback

1. Enter into Playback: Short press OK to pause Recording Mode (Red dot will disappear off screen) Long press DOWN
2. UP/DOWN to select the target video clip or Photo; OK to Play/Pause the video clip.
3. When the video clip is playing, Short press UP to enter into Delete/Lock. Long press UP again to exit from Delete/Lock.

Video: (A is main lens,B is secondary lens)

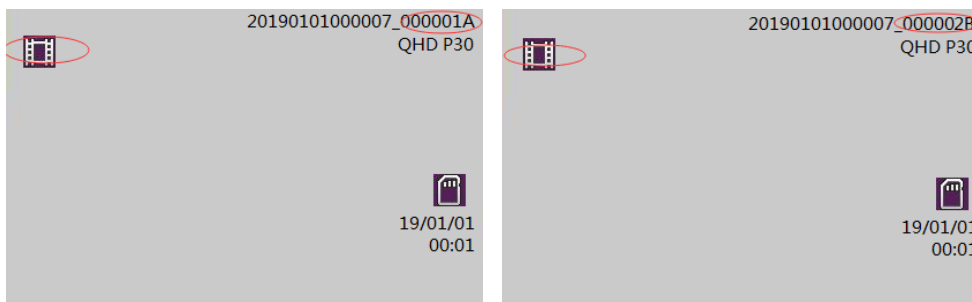
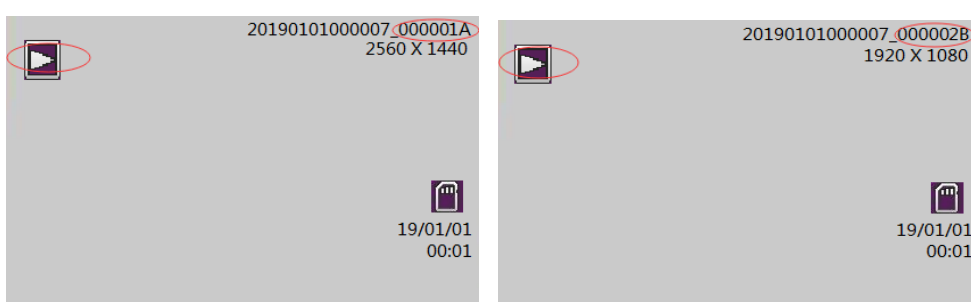


Photo: (A is main lens,B is secondary lens)



View Camera Recordings

There are two options for viewing the recorded video footage.

1. Connect the camera directly to a computer using a suitable USB data cable. Press the DOWN button on the camera simultaneously as the data cable connects. Release the DOWN button when the USB icon appears on camera's screen.
2. Remove the SD card from the camera and insert into a computer using a card reader, if required.

To view the video footage on Mac or Windows computer, the recommended media player:

Download for Windows or MAC

Windows

<https://sourceforge.net/projects/gxplayer-v4-2-8/>

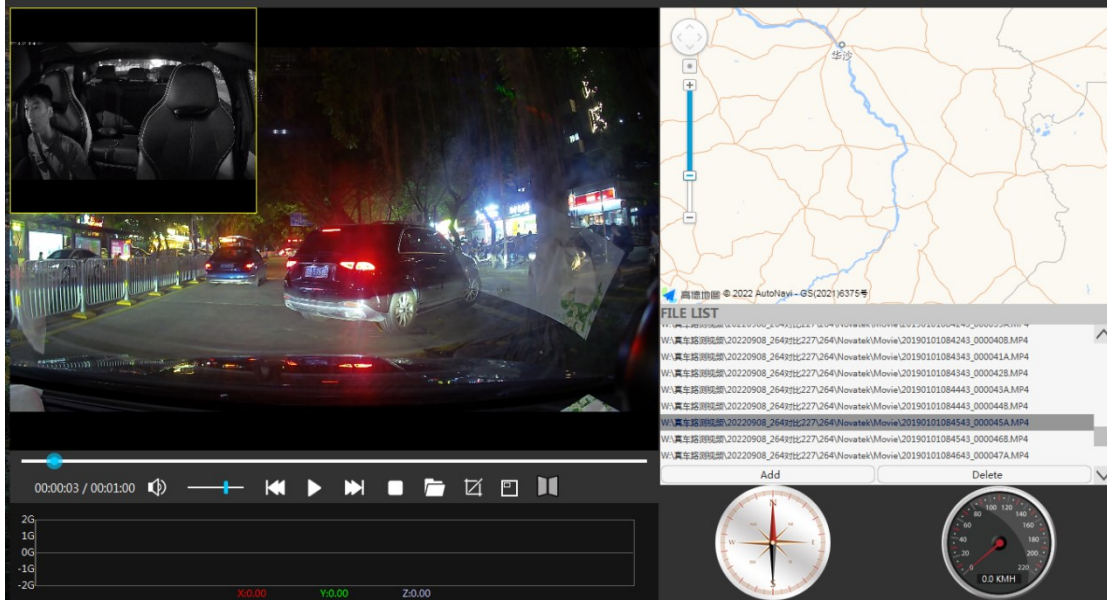
Or you can download it directly on your SD card or pick up the link:

Insert the SD card into a computer. Using file manager, locate the folder named "PLAYER" Open the text file "Readme" and copy the appropriate URL and paste into a web browser. The file will download. Extract the files to a convenient location. Find and double click the GXPlayer.exe file.

MAC

Search for “GXPlayer” at the Apple Store. Then download and install the software.

To view the recorded videos, select “Open File” in the player and select the SD card then press “OK” The video files will load up into the player. Please see the picture below.



Camera Reset

10 sec long press OK (In the case of system error only). then the camera starts to reset automatically.

Firmware Upgrade

Important: The camera must be powered up for the duration of the update.

1. Back up the files on the micro SD card if required.
2. Format the SD card using the format option in the camera.
3. Extract the firmware DVR (BIN file) or MCU (IAP file) and place it in the root folder of the micro SD card.
4. Insert micro SD card into camera and then turn on the power. Make sure camera is connected to the power cable during whole update process.
5. The camera will update automatically. On screen confirmations will appear as follows: Read File - Write Firmware - Write Done. The complete process will take several minutes.
6. The camera will reboot after the update is completed.
7. It is recommended that the micro SD card is then formatted in the camera after the firmware update.
8. Check settings as required. The camera will revert to factory default settings.

Specifications

Main Processor	NT96675
Image Sensor	Front: GK4653 4-megapixel CMOS Rear: GK2053 2-megapixel CMOS
Lens	Front: 140° view angle; 6-layer glasses; 1 infrared filter Rear: 130° view angle. with 8pcs infrared LED
LCD screen	1.5" TFT LCD
G-sensor	Built-in; 3-axis; sensitivity 3-level adjustable
System Language	English Français Español Português Deutsch Italiano 简体中文 繁体中文 Русский 日本語
Video	1440P 30fps+1080P 30fps
	1080P 30fps+1080P 30fps
Audio	Built-in microphone & speaker
Image	JPEG format
RAM	2GB
Storage	By external SDHC microSD; Up to 128GB; Class 10(UHS-1) or above; in FAT32
Battery	No. but built-in supercapacitor
Power Input	5Vdc/1.5A
Power Interface	Micro USB
Power Consumption	4W-5.5W
Working Temperature	-4° to 158°F (-20° to 70°C)
Storage Temperature	-4° to 176 °F (-20° to 70°C)

Trouble Shooting

Camera will not record.

Check if there is enough storage space on the micro SD card. Check the number of protected files (read only attribute). Format the SD card.

Camera records intermittently.

The data stream is high-definition video and the file sizes are very large. We recommend a high-quality micro MLC SD card.

“File Error” prompt during playback.

Corrupt data storage will result in the file error. Use the “FORMAT CARD” menu to format the micro SD card. Consider changing the SD card if this happens on a regular basis.

Video is blurred.

Remove the lens protection film. Ensure the lens and windscreen are clean. Use a lens cleaner to clean the lens if necessary.

Video has horizontal lines.

This is due to the wrong “Flicker” setting. Adjust to the required frequency 50Hz / 60Hz.

Camera does not auto start recording when the ignition is turned on.

Set the Movie Clip Time to 1 / 3 / 5 minutes. Not OFF. The camera will not auto start recording when Movie Clip Time is OFF and the micro SD card is full.

Camera is frozen.

Unplug the power cable from the camera. Wait for 30 seconds then reconnect.

Camera takes a long time to boot up.

If the camera has not been used for a long time it may take longer to boot up due to the initial conditioning of the super capacitor. This is normal and not a fault. The camera does not have a built-in battery.

support@amacam.net
www.amacam.net