

Thank you for purchasing this advanced Car DVR. This device is designed for real time video and audio recording when driving.

Please read this manual carefully before using your camera, and keep it for future reference.

IMPORTANT: Please register your camera to receive firmware updates: www.amacam.net

For technical support please contact us at support@amacam.net



AMACAM AM-C60

INTRODUCTION

FEATURES

- Super HD Car DVR
- 2.4" LCD color screen
- 160 degree wide angle lens
- Motion detection
- HDR
- WDR
- Automatic emergency recording for collision detection
- Supports micro-SDHC up to 32GB (Class 6 or above is recommended for HD video).

PACKAGE CONTENTS



IMPORTANT NOTES

- Company is NOT responsible for the loss of any data during operation.
- Do not manually operate the device while driving.
- Please use the authorised charger only.
- Never disassemble or attempt repair of this product. Doing so may damage the DVR, cause electric shock and void your product warranty.
- Never short-circuit the battery.
- Exposing the DVR to open flames can cause explosion.
- GPS location accuracy may differ depending on weather and location such as high buildings, tunnels, undergrounds, or forests. GPS satellite signals cannot pass through solid materials (except glass). Tinted window may affect the performance of the GPS satellite reception. The values displayed in this system, such as speed, position, and the distance warning to the speed camera set points, may be inaccurate due to the influence of surrounding environment. They are for your reference only.

OVERVIEW



INSTALLING IN CAR

MOUNT TO WINDSHIELD

Slide the camera into the bracket holder until you hear a click.



With the suction-cup lying flat, position the suction-cup on the windshield.

Make sure the base is securely locked in place.



ADJUST THE DRIVING POSITION

Loosen the knob to swivel the device vertically.



Loosen the knob to swivel the device horizontally up to 360°.



Then tighten the knob to make sure the device is securely locked in place.

MEMORY CARD

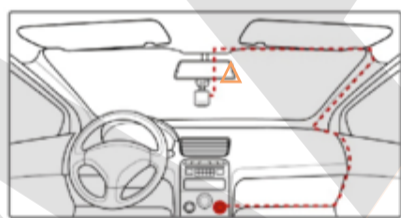
Insert the memory card with the gold contacts facing the back of the camera. To eject again, just push.



- Do not remove or insert the memory card when the device is being powered on. This may damage the memory card.
- Use class 6 (or above), above 4G and up to 32G, micro SD card for this DVR.
- We recommend that you format the micro SD cards before the first use.

CONNECTING TO POWER

- Use only the supplied adapter and cable to power the device and charge the built-in battery.



- Connect one end of the adapter to the USB connector.
- Plug the other end to the cigarette lighter socket of your vehicle. Once the vehicle engine is started, the DVR powers on automatically and starts cycle recording.

- The yellow LED lights up while the battery is charging.
- If the environment temperature reaches 45°C or above, the car adapter still can supply power to DVR, but it will not charge the battery. This is the characteristic of Lithium polymer battery and is not a malfunction.

TURNING ON AND OFF

AUTO ON/OFF

When the vehicle engine is started, the device automatically turns on and starts recording.

When the vehicle engine shuts down, the DVR automatically saves the recording and turns off the power within 5 seconds. There is a countdown timer on the screen.

MANUAL ON/OFF

To manually turn on the power, press the POWER button for 2 seconds.

To turn off, press and hold the POWER button for at least 2 seconds.

SETTING DATE AND TIME

To set the correct date and time, do the following in standby window:

1. Press **MENU** button.
2. Press **▼** button twice, to select system setups.
3. Press **OK** to enter system setups. -Press **▼** to select Date and Time.
4. Press **OK** and use **▲** and **▼** to change the digits. Press **OK** again to move to another digit.

RECORDING

RECORDING VIDEOS WHILE DRIVING

When the vehicle engine starts up, the DVR automatically turns on and starts recording. Or press **OK** to start recording manually.

Recording will automatically stop when the engine is switched off. Or press the **OK** button to stop recording manually.

Notes

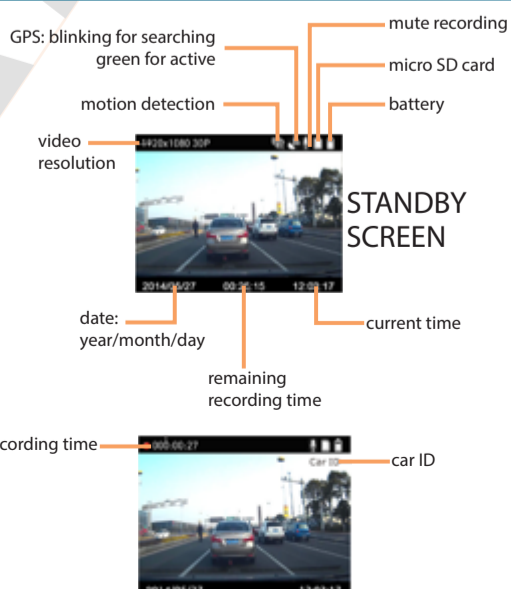
One video file is saved every 1, 2, 5, or 10 minutes of recording. See Using the Menu.

The device saves the recording in the memory card. If the memory card capacity is full, the oldest file in the memory card is overwritten. See Using the Menu.

On some cars, the recording will continue when the engine is switched off. If this happens, please remove the car adapter from the cigarette lighter.

MICROPHONE MUTE

Use **▲** and **▼** to mute and un-mute the microphone while recording.



EMERGENCY RECORDING

During Video Recording, press the **MENU** button to enter emergency recording mode.

The icon will be shown immediately on the upper center of the screen, and the recorded file will be protected.

To stop the emergency mode, press the [Menu] button again.

NOTES

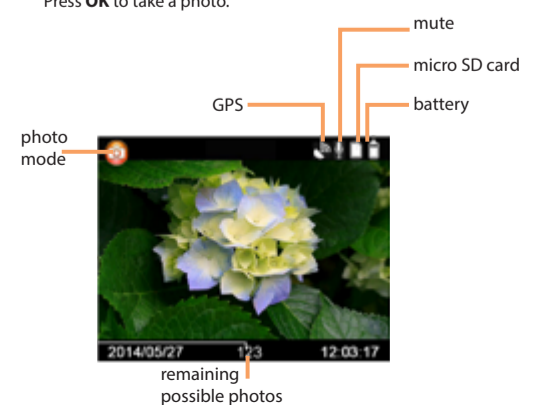
- If the G-Sensor is enabled and a collision is detected, the device will automatically trigger the emergency recording.
- The emergency recording file is created as a new file, which will be protected to avoid being overwritten by normal cycling recording. If the space of emergency files exceed 25% of the card capacity, the system will erase the oldest emergency files.

TAKING PHOTOGRAPHS

You can also use this camera to take photos.

From the standby screen, hold the [MENU] button to enter Photo Mode.

Press **OK** to take a photo.

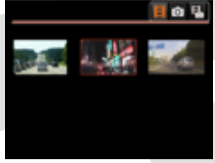


PLAYBACK

If recording is in progress, press **OK** to stop recording. The standby screen is displayed.

PLAYING VIDEOS

• Press **▼** to enter video playback list.



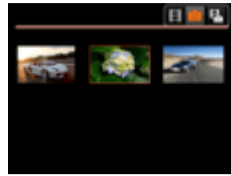
- Press **▲▼** to browse for the desired video file and press **OK** to play the video.
- Press **OK** to pause the playback. Press it again to resume.
- Press **▲▼** to adjust the video volume.
- Hold **▲▼** to fast forward or backward.
- Press **MENU** to stop playing and return to video list.

TIP: You can play all videos continuously. After selecting one video, hold menu button and choose **Video play all**.

VIEWING PHOTOS

• Hold **MENU** to enter into photo mode

• Press **▼** to enter into photo list



- Press **▲▼** to select picture and press **OK**.
- During viewing, press **▲▼** to view the next photo.
- Press **MENU** button to return to photo list.

MANAGING FILES

DELETING OR PROTECTING FILES

From the video standby or photo standby window:

- Press **▼** to enter video or photo list.
- Press **▲▼** to select file. Hold **MENU** for 2 second.
- Press **▲▼** to Delete file, and press **OK**.
- Choose from **Delete this file** and **Delete all files**.

NOTE: Video file names have the format:
20171225-1432_0001.mp4



AMACAM
www.amacam.net

Manual design by The Leonardo Communication Consultancy
a Starling May International Company
Shenzhen, China
www.stmax.com.cn

GPS PLAYER

- Press **+** to add video to play list (window 5) or if the camera is connected to a computer, it will detect video files automatically.
- Hit **PLAY** in window 3.

WINDOW 1
Key information about this video.

WINDOW 2
Video

WINDOW 3
Direction, G-Sensor and speed

WINDOW 4
GPS route.
You can choose different built-in maps.

WINDOW 5
File tools and video list.

TIPS

- There will be a player inside the root folder of your SD card. Named: RegistratorViewer5.8. Use this player on your computer for GPS route.
- If you lose this player, just format your card on DVR. And it will appear again. Please backup your important videos or date before formatting.
- This is a player from Datakam. Thanks for the support of Datakam.

WEEE Notice

This symbol on the product or on the packaging indicates that this cannot be disposed of as a household waste. You must dispose of your waste equipment and/or battery by handling it over to the applicable take-back scheme for the recycling of electrical and electronic equipment and/or battery. For more information about recycling of this equipment and/or battery, please contact your city office, the shop where you purchased the equipment or your household waste disposal service. The recycling of materials will help to conserve natural resources and ensure that it is recycled in a manner that protects human health and environment.

CE Regulatory Notice

This equipment complies with the requirements set out in the Council Directives on the Approximation of the Laws of the Member States relating to Electromagnetic Compatibility (2004/108/EC); the Low Voltage Directive (2006/95/EC); the Restriction of The Use of Certain Hazardous Substances in Electrical And Electronic Equipment Directive (2002/95/EC), Turkish EEE Directive; the Commission Regulation (EC) No 1275/2008 implementing Directive 2005/32/EC of the European Parliament and of the Council with regard to eco-design requirements for standby and off mode electric power consumption of electrical and electronic household and office equipment, and the Directive 2009/125/EC.

SETTINGS

Press **MENU** to enter into setup.

PHOTO SETTINGS

Press the **▼** to switch to Photo settings.

SYSTEM SETTINGS

Press **▼** again to enter system settings. Then:

- Press **▲▼** to select settings and press **OK** to enter.
- Press **▲▼** to select the right options and press **OK**.
- Repeat step 1, 2 until finish all setups.
- After finish, press **MENU** to quit menu setup.

Video Resolution (HDR only works if selected in HDR1080P30 mode.)	• 2560 x1080 30P 21:9 • 2304 x1296 30P 16:9 • 1920x1080 45P 16:9 • HDR1920x1080 30P 16:9	• 1920x1080 30P 16:9 • 1280x720 60P 16:9 • 1280x720 30P 16:9
Video Quality	• S. Fine (Super Fine) • Fine • Normal	
WDR	Wide Dynamic Range - Adjusts automatically to bright and dark areas to adjust for and eliminate overexposure and under exposure conditions	
Date and Time Stamp	On/Off (It's not possible to turn on elements separately. For example only showing time is not possible.)	
Photo Resolution	• 9M(4000*2250 16:9) • 6M(3264*1836 16:9) • 4M(2688*1512 16:9)	
Photo Quality	• Super Fine • Fine • Normal	
Date and Time Stamp	On/Off (It's not possible to turn on elements separately. For example only showing time is not possible.)	
White Balance	• AUTO • Incandescent • D4000 • D5000 • Sunny • Cloudy	
TV Playback Format	Set the right TV system: • NTSC(recording 30fps) • PAL(recording 25fps)	
Date and Time	Format: Year/Month/Date; Hour: Minute (MENU to move right; OK to confirm)	
LDWS and FCWS Detection	Lane Departure Warning System: This intended to prevent inadvertent lane changes and roadway departure accidents by alerting the driver if a crossing of the lane markings at either side is imminent. The camera tracks the vehicle's position relative to the lane markings. If the vehicle is about to leave its lane, the camera sounds an alert. Forward Collision Warning System: The camera sounds an alert if the vehicle in front is less than 3 metres away.	
LDWS Calibration	To set the LDWS: Use the ▲ and ▼ buttons to move the top line to the height of the horizon and the bottom line to the height of the front of the vehicle. Press the Menu button to select the lines as required.	
Headlights On Alert	On/Off Sets an alarm to warn of fading light and to turn on headlights	
Driver Fatigue Timing	• 1 Hour • 2 Hours • 3 Hours • Off Sets an alarm to warn the driver of possible tiredness	

Driver ID	Press OK to choose ENG/CHS/RUS Use ▲▼ to move left and right. Use MENU to go down. Press OK to input each character (up to 9 digits). Choose backspace to replace old characters. Finally select OK to quit.
Memory Card Format	Format the card: Yes/No
Default Setting	Restore factory setting: Yes/No
Motion Detection	Will start recording if objects move in front of the camera. After start, there will be a sign on the screen. Press OK to start detection. The sign will blink. After detecting objects, the system will start recording.
LCD Time Delay	Sets the delay before screen turns off: OFF/30sec/1min/3min
Loop Recording Time	Sets the length of each video file before a new cycle of recording. (1, 2, 5, 10 min. The default time is 2 minutes.) New files will replace the old ones:
GPS Power	ON/OFF
Time Zone	Default is 0 Use ▲▼ to move left and right.
G-Sensor Level	Use ▲▼ to move left and right. 0 = OFF. 5 is the most sensitive.
Scene Mode	• OFF • Night • Night portrait • Sports • Landscape • Portrait • Sunset • Sand • Snow • Flower • Firework • Water • Backlight • Tripod • Blue Sky • Macro • Arena
AE (autoexposure) BIAS	Set from [-2.0] to [2.0] Use ▲▼ to move left and right.
Speed Stamp	The GPS speed will hide on video when set speed is reached.
Speaker Volume	Set from 0 (mute) to 8. Default is 8. Use ▲▼ to move left and right.
Language	ENG / 简体中文 / 繁体中文 / Русский
Firmware Version	Please check for firmware updates on our website. www.amacam.net

SPECIFICATION

Image Sensor	1/3" CMOS Sensor	G-Sensor	3-Axis G-Force sensor
Effective Pixels	2688 (H) x 1520 (V)	ISO	Auto
Storage Media	Supports Micro SDHC, up to 32GB class 6 or above	White Balance	Auto
LCD Screen	2.4" LCD color TFT (262K pixels)	Microphone	Yes
Lens	160° Wide Angle Fixed Focus lens F2.0, f=2.8mm	Speaker	Yes
Focus Range	1.5m - Infinity	Interface	Mini USB, Mini C Type HDMI
Max Resolution	2560 x 1080 30fps 2304 x 1296 30fps For all resolutions, please refer to menu.	Battery	Built-in 400mAh Li-Po rechargeable
Photo	4M (2304 x 1536) JPG format For all definitions, please refer to menu	Operating Temperature	-10° - 60° C
Shutter	Electronic shutter Auto:1/2 - 1/2000 sec.	Operating Humidity	20 - 70% RH
GPS	Built-in Ublox chip	Storage Temperature	-20° - 80° C
		Dimensions	62.5(W) x 67(H) x 34.5(D) mm
		Weight	100g

FOR YOUR NOTES

